



Short Communication

An efficient three dimensional universal guide for accurate placement of mini implants

Yogesh Subhash Phalak^{1,*}, Veerendra V Kerudi¹, Mrunal S Aley¹, Shobhit K Saxena¹, Prasad A Borole¹, Madhulika Sharma¹

¹Dept. of Orthodontic and Dentofacial Orthopedics, ACPM Dental College and Hospital, Dhule, Maharashtra, India



ARTICLE INFO

Article history:

Received 28-07-2020

Accepted 10-08-2020

Available online 04-09-2020

Keywords:

Orthodontic mini-implants
Implant placement guide and
Anchorage.

ABSTRACT

Anchorage refers to the resistance against displacement by anatomical structures and the control of anchorage is one of the main factors for determining the success of orthodontic treatment. Conventional means of anchorage system were extra-oral and intra-oral anchorage. Evolution of intra-oral skeletal anchorage provided “Absolute Anchorage” using dental implants, miniplates and mini implant for fixed appliances which demanded stationary type of anchorage. Success of orthodontic mini implant depends on root proximity of the screw, cortical bone thickness and placement angle. In this article, we have described a grid for site selection and a well designed standard placement guide to prevent the root proximity while insertion, and reduce the chance of implant failure.

© 2020 Published by Innovative Publication. This is an open access article under the CC BY-NC license (<https://creativecommons.org/licenses/by-nc/4.0/>)

1. Introduction

Anchorage refers to the resistance against displacement by anatomical structures and the control of anchorage is one of the main factors for determining the success of orthodontic treatment.¹ Conventional means of anchorage system were extra-oral and intra-oral anchorage. Extra oral anchorage was required to negate the forces generated by the intra-oral fixed appliances. Intra-oral anchorage methods were used for 24 hours, but encountered some percentage of anchor loss. Evolution of skeletal anchorage provided “Absolute Anchorage” using dental implants,² miniplates³ and mini implant⁴ for fixed appliances which demanded stationary type of anchorage. Titanium mini implant are currently in trend because of their use in various complex tooth movement, minimal anatomical limitations for placement, minimum tissue destruction, low cost and simpler placement.⁵ Placement of the mini implant should be in the keratinized gingiva as placement in non-keratinized gingiva leads to formation of hypertrophic tissue formation and inflammation, leading to failure of the mini

implant.^{6,7}

Success of orthodontic mini implant depends on root proximity of the screw, cortical bone thickness and placement angle. For prosthetic implants, 3mm between the adjacent root and implant surface is recommended for integration and proper health of the tooth.⁸ Till date no data is published regarding minimum distance between the mini implant and the adjacent tooth root surface. Hence, mini implant should be maximum away from the adjacent tooth root surface.⁵

Precise selection of mini implant is important for its stability. Placement of mini implant is inter-radicular therefore it should be thinner in diameter, but in order to increase the surface area for stability the length of the mini implant is increased. As reported by Poggio et al, the “Safe Zones” for the placement of mini implants in maxilla are mesio-distally between the second and first premolar palatally, and buccopalatally between the first and second premolar. In mandible, mesiodistally the greatest amount of bone was found between first and second premolar; and least at first premolar and canine region. Buccolingually the thickness is more at first and second molars while least at

* Corresponding author.

E-mail address: ysphalak32@gmail.com (Y. S. Phalak).

first premolar and canine, thus these sites are suitable for implant placement.⁹ The thickness of gingiva must also be considered for selection of mini implant, to determine the length of the neck.¹⁰

Increasing the vertical angulation of mini implants by 30° during placement increases the cortical plate contact by 1.5 times than by placing perpendicular to the cortical bone.¹¹ Increasing this placement angle will increase the contact with the cortical plate.¹² According to Zhao et al, a placement angle of 50° to 70° gave best stability.¹³ However, El-Beialy et al statistically reported no significant result with vertical placement angle and the implant success.¹⁴ The stability of the mini implant also increases with age above 18 years and in males as reported by Fayed et al.,¹⁵ due to increase in cortical bone thickness.

A 1 mm of clearance of alveolar bone is required for periodontal health of the adjacent tooth from the surface of the mini implant. Thus a minimum of 3 mm of interdental bone is required for the placement of 1 mm diameter of mini implant.^{9,16}

1.1. Complications of mini implants

1. Mobility of mini implants
2. Proximity of tooth root
3. Oro-antral communication
4. Peri-implantitis
5. Undesirable tooth movement
6. Mini implant fracture
7. Mini implant slippage¹⁷
8. Nerve involvement¹⁷

Among the above mentioned complications the proximity of the tooth root to the mini implant surface is utmost important for the stability of mini implant. Hence, the implant must be inserted in a predetermined angulated position and path to avoid root proximity and failure. Several grids and guides have been designed for placement of mini implants,^{18–20} but this appliance is much more accurate for site selection and pre determined angulation of mini implant insertion.

2. Method of construction

Three dimensional universal guide consists of

2.1. A metallic grid for site selection (Figure 1)

The grid was fabricated using 0.7mm round stainless steel wire. The dimension of grid were 10 x 10 mm into which 4 horizontal and 4 vertical wires were welded. A vertical arm through the middle was used for the attachment between the base arch wire and grid. This base arch wire (0.019 x 0.025) passes through the slots of the brackets and tubes.

2.2. Implant positioning guide (Figure 2).

Guide is fabricated using a jackscrew, one guiding pin of the jackscrew is cut. A 1 mm wire is used for the formation of the 2 helix guide (internal diameter 6 mm) and transverse arm (length 10 mm), the 2 helices must be unicentric and symmetrical (for confirmation hold the appliance at one hand distance such that when seen from one helix the other helix should not be visible). Solder this appliance to the jackscrew on one side and on other side weld a 0.019 x 0.025 inch base arch wire so as to position the guide. The proximal view shows the central driving shaft and the angulated helices with soldered arch wire (Figure 2b).

3. Method of placement

The steps for implant placement are as follows,

1. Initial levelling and alignment must be accomplished for the placement of grid and guide.
2. Infiltration with local anaesthesia
3. Place the grid in position with the horizontal base wire in bracket slots securely (Figure 3) and shoot an IOPA for that region with angulation less than 10° from ideal. This angulation was chosen because with ideal angulation the grid was observed more occlusally on IOPA, hence to get higher accuracy for the implant placement site the angulation was modified.
4. Radiographically, select the proper slot for implant placement (Figure 4), correlating clinically with the mucogingival junction and puncture the selected site with probe (Figure 5). Later remove the grid.
5. Place the implant guide in position, adjust the guide vertically (by opening the screw or by closing) and horizontally such that the point of puncture is in center of the first helix (Figure 6).
6. Now hold the mini implant in the implant driver and place the implant driver in the guide such that the shank of the implant driver is not touching the second helix. Start inserting the mini implant and keep a watch on the second helix of the guide so that the shaft is not touching the ring or is symmetrical from all the sides (Figure 7).
7. Insert the implant till the neck and then release the implant driver and remove the guide from position. Tighten the screw, if required, in case the neck is visible (Figure 7).
8. Take confirmatory radiograph to evaluate the proximity of the implant with the adjacent tooth roots (Figure 8).

The necessary torque incorporation in base arch wires to adapt the grid and guide should be judged clinically, if required.

3.1. Advantages

1. No need for customised fabrication
2. Can be used in all four quadrants including anterior segments
3. Grid and guide can be autoclaved.
4. It is very reliable and accurate method of placement of implants.



Fig. 1: Metallic Grid with horizontal base arm and vertical connecting arm

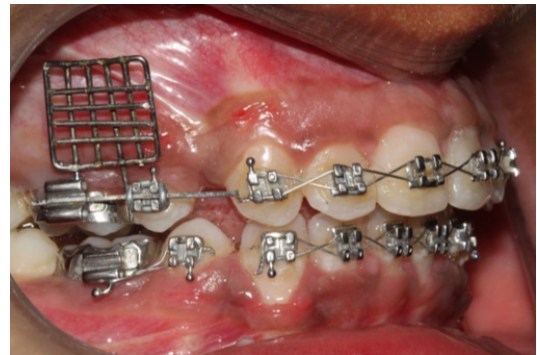


Fig. 3: Grid in place for implant site selection

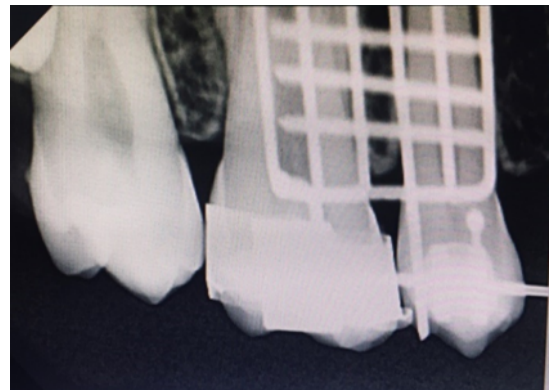


Fig. 4: Radiograph for site selection interproximally

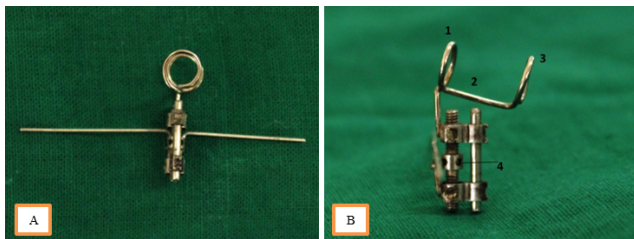


Fig. 2:

Implant placement guide (A) the transverse arm given 15° degree angulation for implant angulation

1. First helix
2. Transverse arm
3. Second helix
4. Driving shaft

4. Source of Funding

None.

5. Conflict of Interest

None.



Fig. 5: Punch the selected site with probe

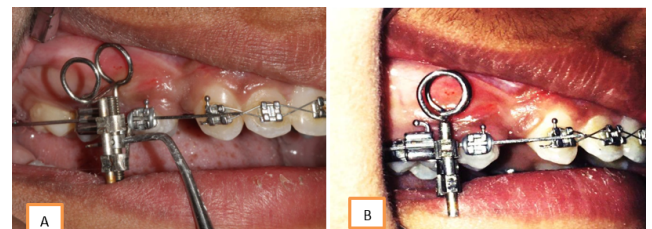


Fig. 6: Guide placed in position and adjusted vertically by closing the screw(A) the punched site in center of the helix (B)



Fig. 7: Implant placed in the center of the helix



Fig. 8: Implant placed with 15° angulation with proper interproximation between the roots.

References

1. Park W, Park JS, Kim YM, Yu HS, Kim KD. Orthodontic extrusion of the lower third molar with an orthodontic mini implant. *Oral Surg, Oral Med, Oral Pathol, Oral Radiol Endodontol.* 2010;110(4):1–6.
2. Roberts WE, Helm FR, Marshall KJ, Gongloff RK. Rigid endosseous implants for orthodontic and orthopedic anchorage. *Angle Orthod.* 1989;59:247–56.
3. Sherwood KH, Burch JG, Thompson WJ. Closing anterior open bites by intruding molars with titanium miniplate anchorage. *Am J Orthod Dentofac Orthop.* 2002;122(6):593–600.
4. Kyung HM. Overview development of orthodontic micro-implants for intraoral anchorage. *J Clin Orthod.* 2003;37:321–8.
5. Kuroda S, Yamada K, Deguchi T, Hashimoto T, Kyung HM, Yamamoto TT, et al. Root proximity is a major factor for screw failure in orthodontic anchorage. *Am J Orthod Dentofac Orthop.* 2007;131(4):S68–S73.
6. Melsen B, Verna C. Miniscrew implants: The Aarhus anchorage system. *Semin Orthod.* 2005;11(1):24–31.
7. Maino BG, Bednar JO, Pagin PA, Mura PA. The spider screw for skeletal anchorage. *J Clin Orthod.* 2003;37(2):90–7.
8. Wood MR, Vermilyea SG. A review of selected dental literature on evidence-based treatment planning for dental implants: Report of the Committee on Research in Fixed Prosthodontics of the Academy of Fixed Prosthodontics. *J Prosthetic Dent.* 2004;92:447–62.
9. Poggio PM, Incorvati C, Velo S, Carano A. Safe zones”: a guide for miniscrew positioning in the maxillary and mandibular arch. *Angle Orthod.* 2006;76:191–7.
10. Parmar R, Reddy V, Reddy SK, Reddy D. Determination of soft tissue thickness at orthodontic miniscrew placement sites using ultrasonography for customizing screw selection. *Am J Orthod Dentofac Orthop.* 2016;150(4):651–8.
11. Moon CH, Lee DG, Lee HS, Im JS, Baek SH. Factors associated with the success rate of orthodontic miniscrews placed in the upper and lower posterior buccal region. *Angle Orthod.* 2008;78:101–6.
12. Miyawaki S, Koyama I, Inoue M, Mishima K, Sugahara T, Takano-Yamamoto T, et al. Factors associated with the stability of titanium screws placed in the posterior region for orthodontic anchorage. *Am J Orthod Dentofac Orthop.* 2003;124(4):373–8.
13. Zhao L, Xu Z, Wei X, Zhao Z, Yang Z, Zhang L, et al. Effect of placement angle on the stability of loaded titanium microscrews: a microcomputed tomographic and biomechanical analysis. *Am J Orthod Dentofac Orthop.* 2011;139(5):628–35.
14. El-Beialy AR, Abou-El-Ezz AM, Attia KH, El-Bialy AM, Mostafa YA. Loss of anchorage of miniscrews: A 3-dimensional assessment. *Am J Orthod Dentofac Orthop.* 2009;136(5):700–7.
15. Fayed MMS, Pazera P, Katsaros C. Optimal sites for orthodontic mini-implant placement assessed by cone beam computed tomography. *Angle Orthod.* 2010;80:939–51.
16. Liou EJW, Pai BCJ, Lin JCY. Do miniscrews remain stationary under orthodontic forces? *Am J Orthod Dentofac Orthop.* 2004;126(1):42–7.
17. Kravitz ND, Kusnoto B. Risks and complications of orthodontic miniscrews. *Am J Orthod Dentofac Orthop.* 2007;131(4):S43–S51.
18. Sharma NS, Hazarey PV, Kamble RH, Sharma PN. Universal Wire Grid for Implant Placement in Three Dimensions. *World J Dent.* 2013;4(1):74–6.
19. Kumar D, Mithun K, Shamnur N, Gopal KR. A simple and efficient grid for accurate orthodontic implant placement. *Dent Med Res.* 2015;3:26.
20. Maurya RK, Gupta A, Garg J, Shukla C. A custom made grid to guide placement of temporary anchorage devices. *APOS Trends Orthod.* 2015;5:299–303.

Author biography

Yogesh Subhash Phalak IIIrd year Post Graduate Student

Veerendra V Kerudi Professor and HOD

Mrunal S Aley Professor

Shobhit K Saxena Professor

Prasad A Borole IIIrd Year Post Graduate Student

Madhulika Sharma IIIrd Year Post Graduate Student

Cite this article: Phalak YS, Kerudi VV, Aley MS, Saxena SK, Borole PA, Sharma M. An efficient three dimensional universal guide for accurate placement of mini implants. *IP Indian J Orthod Dentofacial Res* 2020;6(3):191-194.